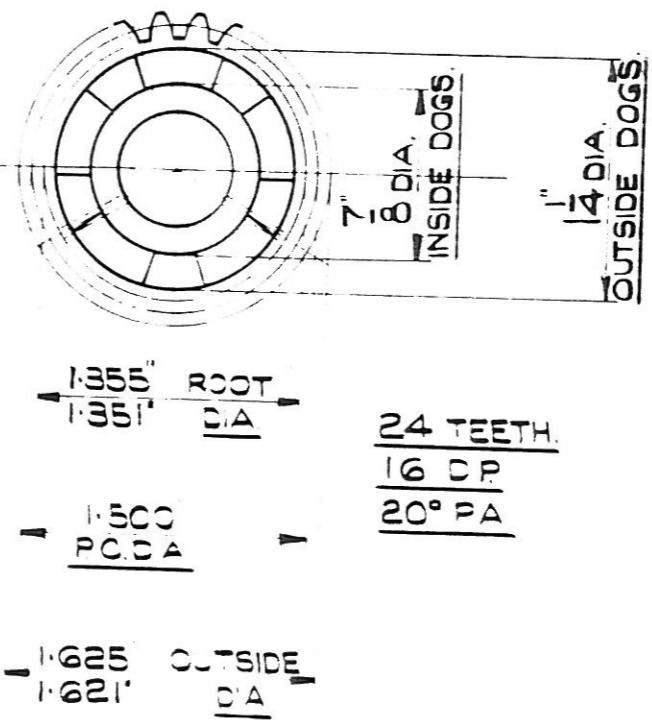
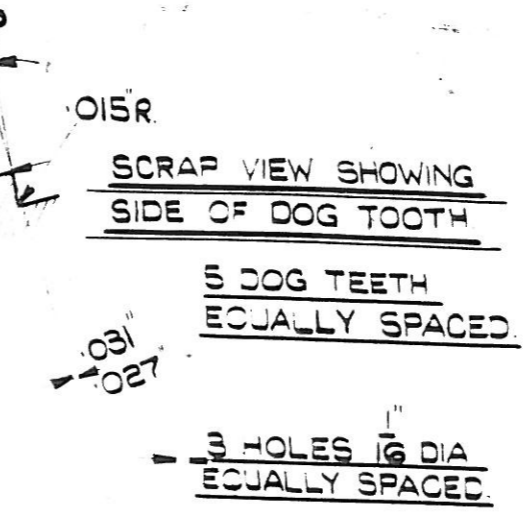
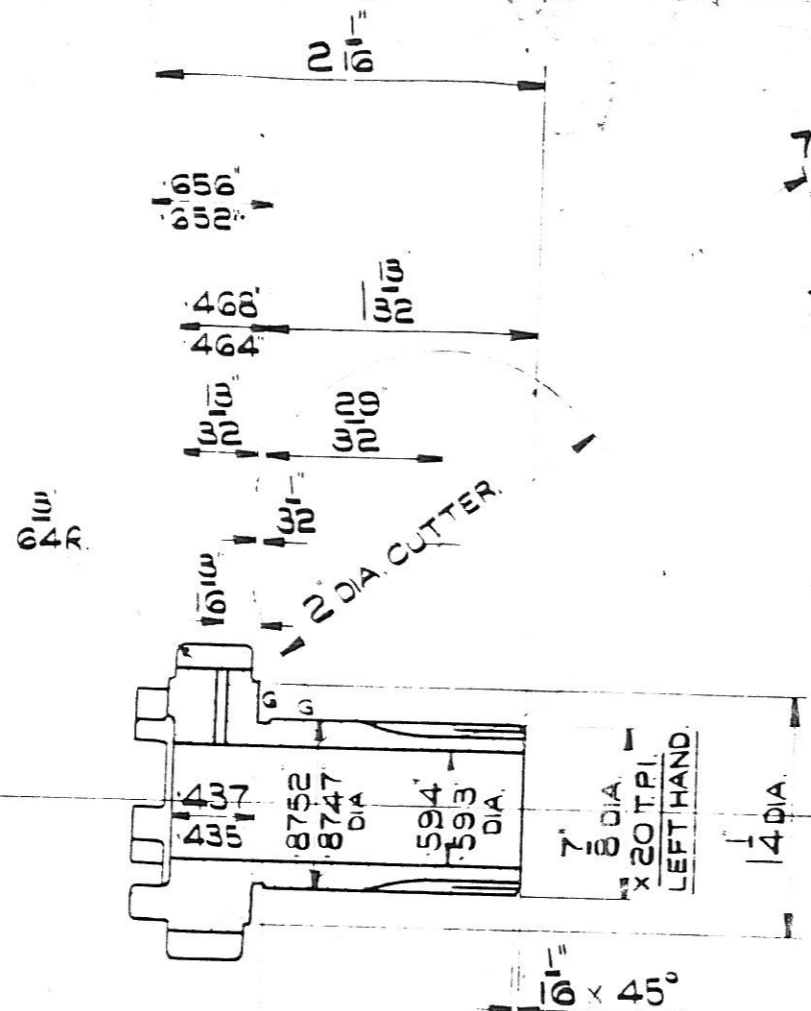
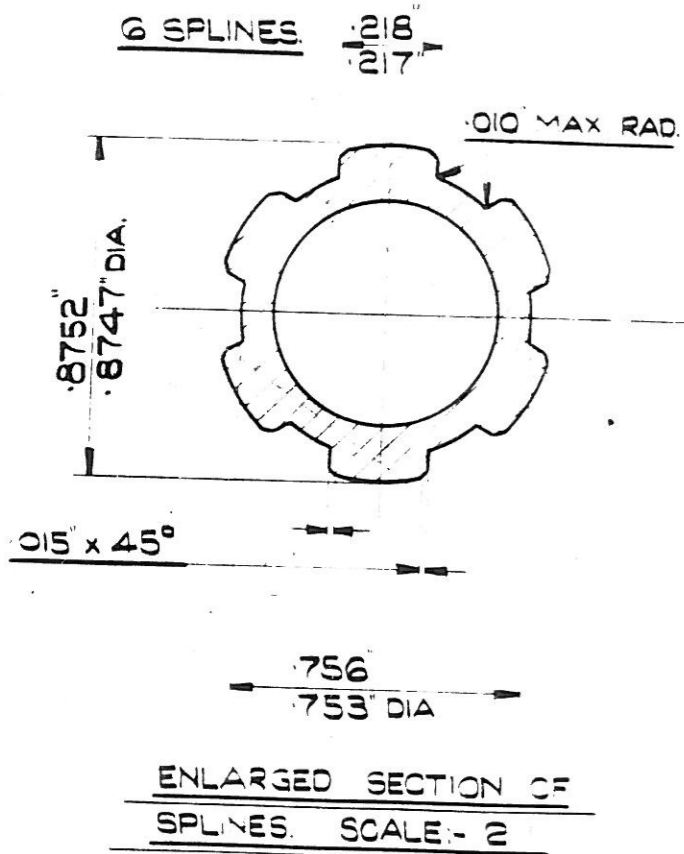


# IMPORTANT NOTES

UNLIMITED DIMENSIONS TO BE WITHIN  $\pm .010$   
 MACHINE ALL OVER GRIND AT 'G'  
 REMOVE SHARP CORNERS.  
 CASEHARDEN .020/.015 DEEP



Op. No.

DATE	13-3-63
AUTHOR	RF.
MADE BY	7° LATE 2°
DETAIL	1/16 LATE 1/32 $\frac{.860}{.866}$ D. $\frac{.870}{.866}$ D.

### REVISIONS

MATERIAL	EN36-V18 (E4-1)
DRAWN BY	G.H.W. 25.8.50
TRACED BY	I.C.C. 23.2.51
CHECKED BY	
APPROVED BY	
DATE	

Nº PER SET	
MODELS	
THE BIRMINGHAM SMALL ARMS CO LTD.	
TITLE - 24 TOOTH PRIMARY DRIVE GEAR. CLOSE RATIO GEARBOX	

90-446