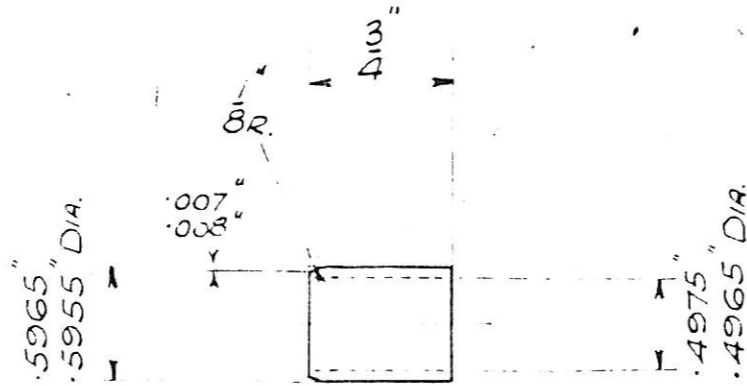


# IMPORTANT NOTES

BORE TO BE FINISHED MACHINED TO .500" / .501" DIA. AFTER PRESSING IN TO PRIMARY DRIVE GEAR 90-66.

SEE ASSEMBLY DRG. 90-65.



90-67

COMP. NO. 90-6  
 CUTTER GAUGE NO.  
 OP. NO.

DATE	3-12-48	16-12-48
BY	PRODUCTION	MPC. LIP
BY	JWH	JWH
DETAIL	4TH ISSUE	8R AND .007/.008 ADDED.
	CHARMS. FILTERED TO SUIT BANDER METAL.	MATERIAL WAS CARBONIZED.

MATERIAL	MPC. H/D BRONZE	NO PER SET	2
DRAWN BY	<i>Leah</i>	MODELS	125 CC 2 STROKE
TRACED BY		THE BIRMINGHAM SMALL ARMS CO LTD.	
CHECKED BY			
APPROVED BY	<i>Leah</i>	TITLE -	BUSH FOR PRIMARY DRIVE GEAR.
DATE	3-12-48		90-67