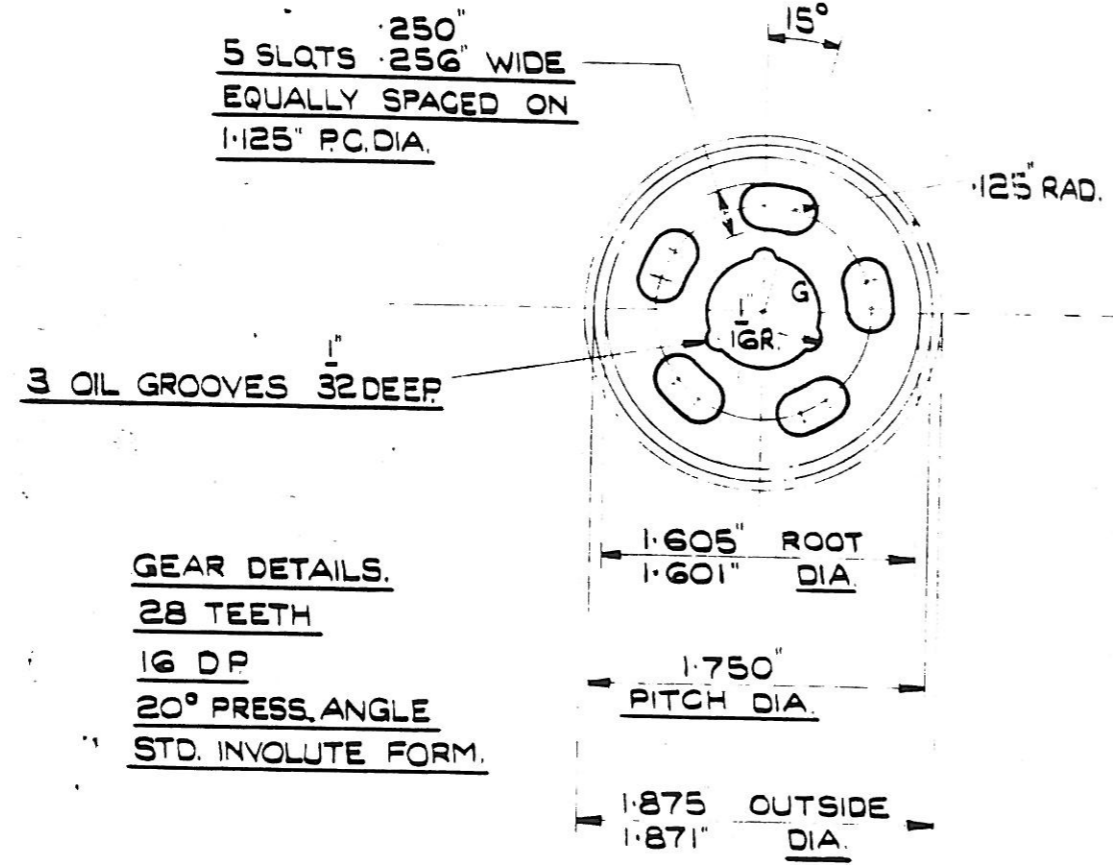
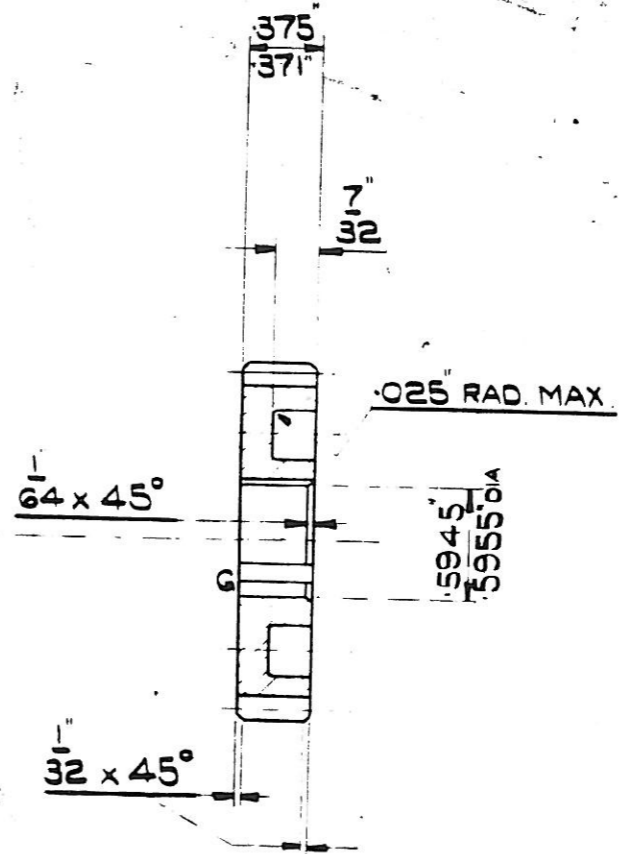


IMPORTANT NOTES

REMOVE ALL SHARP EDGES.
 GRIND AT 'G'
 CASE HARDEN .015/.020" DEEP
 ALL UNTOLERANCED DIMENSIONS
 TO BE WITHIN $\pm .008$ "



GEAR DETAILS.
 28 TEETH
 16 DP
 20° PRESS. ANGLE
 STD. INVOLUTE FORM.



CLUTTER GAUGE NO.	
Op. No.	
DATE	
AUTHOR	
MADE BY	
DETAIL	

MATERIAL	EN36-V18 (E4-1)
DRAWN BY	G.H.W. 28.8.50
TRACED BY	I.C.C. 22.2.51
CHECKED BY	
APPROVED BY	
DATE	

Nº PER SET																				
MODELS																				
THE BIRMINGHAM SMALL ARMS CO LTD.																				
TITLE - <u>28 TOOTH LAYSHAFT GEAR. CLOSE RATIO GEARBOX.</u>																				

REVISIONS	
	<u>90-448</u>

C.P. & C. LTD B.HAM.